



Fusion UDM Premium
vxl software

Technical specifications

Device management for everyone

Fusion UDM Premium

System Requirements

Hardware

- Intel Xeon Server of equivalent
- 8GB RAM Minimum (more if SQL Server on same server)
- 80GB HDD Minimum (more if SQL Server on same server)

Operating System

- Windows Server 2008r2 or Windows Server 2012
- 64 bit OS support Only
- Also supports installation on Windows 7 & Windows 8 Professional for POC purposes

Internet Information Services

- IIS Version 7.0 & 7.5 supported

Microsoft .net Framework

- .net Framework 4.5 supported

Database

- SQL Server 2005, 2008 & 2012 supported
- Express, Standard & Enterprise versions supported

SSL Certificate

- Standard or OpenSSL compatible SSL Certificate

Internet Browser Support

- Mozilla Firefox
- Microsoft Internet Explorer 8/9/10/11
- Google Chrome

Organization Management

Group Management Features

- Static Groups
- Group by Subnet and IP Address Range
- Configure Group Devices to Auto-Join Domain
- Auto-Generate host name during discovery and group inheritance process

Group Organization Architecture

- Up to 10 levels of nested groups
- Provides easy administration and configuration of group nodes
- Tree view & list view based groups
- View devices/terminal nodes by IP Address, MAC or Host Name
- Drag-and-drop of nodes between groups

- Context menu operations for Organization, Group/ Subgroup and node level
- Online & offline status indication
- Differentiation of devices by OS (Linux/ Windows/ MobileOS) and device type (Notebook, Thin client, Zero Client & Mobile)
- Group settings, group profile, group inheritance and zero configuration features supported

Group Level Functions

The following device settings are configurable at group level for group configuration profile, can apply changes to effect instantly or by scheduling.

- Network: Ethernet, Wi-Fi and Wi-Fi security settings
- Domain: Workgroup settings and Join Domain
- Peripherals: Keyboard, Mouse, Display, Printer settings
- User Interface: Wallpaper, Taskbar, Screen Saver and Auto-logon
- System: Date and Time, Power settings and Ram Disk
- Administration: User management, Services management, Agent settings, Performance Management setting (History Cleaner of Browser and Windows, Task Scheduler and Start-up Application List)
- Security: Write Filter, Firewall, Port Settings, and Proxy
- Mobile settings: Integrated Peripheral on/off control for Camera, Bluetooth, Wifi lock/unlock , Data Wipe settings
- Upgrade: Remote Software Installation & Uninstallation, File & Folder Transfer, File import and Software Restriction configuration
- Patch Management: Fusion Patch Management, WSUS-based Patch Management
- Connections: RDP, RDS, Citrix ICA, VMware View/ PCoIP, Browser and various other connections
- Remote Settings : Shutdown, Restart, Log off, Lock Workstation, Wake-On-LAN, Send message, Remove device, shadowing using VNC & RDP, Clone & Deploy Image & Properties, Client Data Synchronization, Service mode, Projector On/Off, Execute Remote Command
- Shadowing: Single VNC with Proxy, RDP w/o proxy
- Multi-Device Shadowing: 'Video-Wall' Multi-View VNC w/o proxy

Group Inheritance

- Configuration of default device settings supported at the group level for inheritance by devices
- Device Settings: Keyboard, Mouse, Display, Date Time, Taskbar settings, Port security settings, Firewall settings, Remote Agent Settings, Screen Saver Setting, Proxy Setting and Date Time Format, Time Zone Settings, Time Server Synchronisation Settings, Connections, Rename Group, Lock Computer

Zero Configuration Features

- Group wise auto hostname generation
- Group wise Join Domain
- Repository Connection association
- VNC Password association

Device Discovery

- Agent-less device discovery: Scan in LAN & Domain Server, Remote Installation of agent, Registration / enrolment

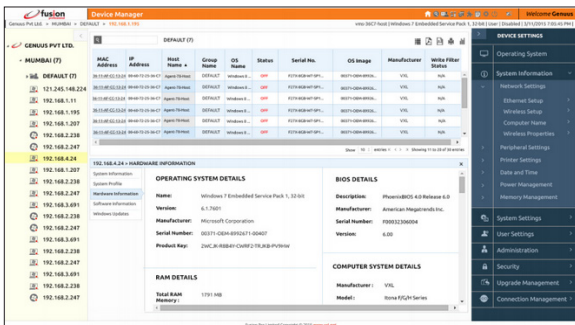
Remote Administration & Configuration

System Settings (Some options are view only)

- Agent based device discovery: Discovery using TCP by IP range, Subnet Range, Discovery using UDP Broadcast
- Auto Discovery by DNS A/CNAME, By DHCP Option Value

General Information

- General: Hostname, Group Name, IP Address, MAC Address, OS Name, OS Version, Manufacturer, Model, Serial Number, Image Build No, Keyboard Status, Mouse Status, Display Status, Agent Version, LoggedIn User, Last Heart Beat, CPU, RAM Size, Disk Size, Keyboard and Mouse Port



- System: Network, Keyboard, Mouse, Display, Printer, Date Time, CD/DVD settings, User Details, Internet Settings, Firewall, Port Settings

Hardware & Software Information

- Hardware: OS information, Computer system information, Bios information, Processor information, Motherboard details, Hard Disk details, RAM information, Graphics Information, Network Adapter Information, Audio device Information, Device manager Information, Port Details, Keyboard Details, Mouse Details
- List of all software installed with installation information
- List of all installed Windows patches

Device status

- System status: On/Off, Keyboard, Mouse, Display, Write-filter, Storage memory status

System logs

- Event logs: Application, Security & System Logs
- Hardware changes or modification logs
- Software modification logs
- System Dashboard (RAM Memory utilization, CPU Utilization)

Network

- Ethernet settings (DHCP, Manual (Hostname, Domain, IP, Subnet, Gateway, Domain, WINS, DNS))
- Wireless settings (DHCP, Manual (Hostname, Domain, IP, Subnet, Gateway, Domain, WINS, DNS))
- Wireless Security Properties (SSID, Network type, Encryption Type, Network Key, Auto connect)
- Computer name and Domain setting

Peripherals

- Keyboard setup (Repeat delay, Repeat rate, Keyboard locales)
- Mouse setup (Double click Speed, pointer speed, LH/RH configuration)
- Display & Dual Display setup (Resolution & Frequency, Colour depth, dual display orientation, dual display clone & extended mode settings)

Printers

- Add, Delete, View & Edit local, IP and Network printers/settings
- Date/Time settings
- Time and Date Setup, Time zone settings, Network time synchronization settings
- Date & Time Format Settings

Power Management

- Power Setting (Shutdown procedure, Power Plans / Schemes, Display, Sleep, Hard disk)
- Memory configuration
- Ram disk configuration (size)

User interface settings

- Wallpaper settings
- User interface settings (Auto logon, Desktop GUI operation mode)
- Screensaver settings (Password, Timeout, Themes)
- Taskbar settings

User Management

- User Configuration & management (View users, Add Users)
- Service management
- Listing of services with details & management (Start/Stop/Restart)

Performance management

- Start-up application settings, Registry backup & restore, Task Scheduler, History & Temp File Cleaner

Remote agent management

- Agent Settings
- Agent Upgrade
- File system
- Write filter operations (EWF, FBWF settings, Add/Remove File & Folders Exclusion)
- Network
- Firewall settings
- Proxy settings

System

- Port Locking for USB, Serial, Parallel ports, Integrated WIFI, Camera, Bluetooth lock setting, Data wipe Settings

Software

- Software Restriction (S/W Installation/Uninstallation Restriction, Execution of Application Restriction)

File system

- Write filter operations (EWF, FBWF settings, Add/Remove File & Folders Exclusion)

Network

- Firewall settings (Add/Edit/Delete exceptions, ports & applications)
- Proxy settings

Upgrade management

- Software upgrade management
- Software installation and uninstallation
- File/Folder Transfer and Transfer file and Execute
- Import File
- Remote application and remote command execution

Patch Management

- Windows Update (List of installed patches, Missing Patches, Failed Patches, Install & Un-install Patches)
- Shows System Health Status, Highly Vulnerable Systems, Vulnerable System, Healthy Systems
- Distribution Server for Patch Management

Connection Manager

- Microsoft RDS/RDP (Windows)
- Citrix ICA/Receiver (Windows & Linux)
- Citrix PNAgent (Windows & Linux)
- VMware View (Windows & Linux)
- RDesktop (Linux)
- XFreeRDP (Linux)
- Internet Explorer (Windows)
- Mozilla Firefox (Linux)
- Global Connection Settings (Windows & Linux)

Remote Control

- Remote control (shutdown, restart, Log off, workstation lock, Remove Agent, Disable Fusion agent, Wake on LAN)
- Synchronize client settings, Capture partitions & drive structure, Clone and Deploy Image & Properties
- Remote text messaging to client
- Remote Shadowing & control using VNC and Microsoft RDP
- Service mode of operation
- SmartBoard Projector control operations
- Execute Remote Command operation

Image and Template Management

- Device properties clone, deployment & archival
- Configuration templates: creation and archival for the following set of configurations is available Keyboard, Mouse, Display, Printers, Date Time, Taskbar, Screen Saver, Users, RAM disk setting, Write filter settings, Port security settings, Firewall settings
- Clone Image and Deploy Image

Repository Manager

- Repository Connection manager - FTP Connection manager, Support for all FTP scenarios or network topologies such as Central and Distributed FTP Settings for File upload and download
- SFTP : Support for FTP Over SSL, Implicit and Explicit for Software upgrade, patch management, wallpaper features
- File management for: Cloned Image upload, Deploy Image download, Software upgrade and patch management download, File transfer download, Wallpaper download, Screen saver download, SSL certificate download

Monitoring

- Site level & Group level Monitoring: Device on/off status, peripherals on/off & operations status, Write filter status
- Activity monitor: Scheduled activity status
- Dash Board: Consolidated status of client on/off, CPU, RAM memory, HDD Storage, Hardware Status (Display, Keyboard, and Mouse)
- Health Monitoring: CPU, RAM and Hard disk Utilization Dashboards as well as History logs
- Alerts: IP change, Hostname change, HDD storage status, USB
- Mass Storage, Hardware & Software Changes, Internet URL monitoring
- Heartbeat: Information sent with heartbeat includes IP Address, MAC Address, Keyboard connection status, Mouse connection status, display connection status, Write filter status
- Dashboard Widgets : Computer Status, Computers By Operating Systems, Distribution Server Status, Alerts, Patch Summary, Software Summary, Task management, Hardware Asset By Type, System Health Status, Computer By make And Model, Software and Hardware changes, Hardware Compliance Status, Inventory Scan Status
- Information Bar : Group, Task and Node information

Task Management

- Task manager with master detail view for tasks under execution, scheduled tasks and status of executed tasks
- Creation of tasks, grouping of tasks with linking and dependency, task sequencing, templates, task scheduling for later execution and recursion

Reports and Audit Logs

- General Reports: Alerts Report, Write Filter Report, Schedule history report, Email Report
- Status Reports: Client Status Report, Hard Disk Storage Status Report
- Inventory Reports: Hardware Inventory Report, Software Inventory Report, Hardware Inventory Summary, Software inventory Summary, Hardware and Software Inventory Summary, Hardware modification report, Software Modification Report
- Compliance reports: Software Metering Report, Unlicensed Client report, Unauthorized Client report
- Monitoring reports: Device monitoring and Application monitoring report
- Audit Logs: Boot, Application, Hardware, Schedule, Idle State, Screen Saver, Software Detail, Server Event, and Internet History

Asset Management

- Asset Management dashboard
- Hardware asset management, master data entry, asset tracking, compliance
- Software asset management, master data entry, asset tracking, compliance

Fusion General Features**Devices and OS's Managed**

- Servers, Desktops, Thin Clients, Mobile Devices, POS and more
- Windows, Windows Embedded, POS Ready, GNU and Gio Linux 6, Android, iOS* and Windows Phone*

*Product function that is part of a phased release

User Management

- User roles & user creation, user role based access rights, user based access rights configuration, Group Wise User Association
- Access control system
- Supports local and ADS domain user authentication. Integrated ADS Authentication
- Local user access using password protection, User privilege levels, User credentials are stored using AES 256 bit encryption
- User session management including single instance restriction, automatic expiry of idle session

General Features

- Dashboard Widgets
- Main Widgets: Computer Status, Computers By Operating System, Alerts, Patch Summary, Software Summary, Task management
- Asset inventory Widgets: Software Summary, Computer By make And Model, Hardware Asset By Type, Software and Hardware changes, Hardware Compliance Status, Inventory Scan Status, Hardware Asset By Type
- Master data and Fusion client license management
- Heartbeat mechanism to track status of devices and its peripherals
- Automatic device discovery initiated from server or client
- Client synchronization/Manual refresh and Modular synchronization
- Database backup and restore
- Real-time Communication using TCP Protocol

Patch Management

- Patch Summary dashboards, Patch wise view, System wise view, Patch synchronisation, Patch Approval, Patch Distribution, installation, Patch management reports
- Patch download from Microsoft repository, download manager, download queue management
- Patch management for Windows (List of installed patches, Missing Patches, Failed Patches, Install & Un-install Patches), System Health Status(Highly vulnerable Systems, Vulnerable System, Healthy Systems)
- Patch management master data update feature to add latest windows security and general patch update information
- Distribution agent for Patch Management

Software Management

- Software summary dashboards, Software wise view, System wise view, Software inventory synchronisation, Approval, Distribution, installation, uninstallation, Software management reports
- Software repository manager

Scheduling Engine Features

- Scheduling support for software configuration, software updates band upgrades, patches and application installation/removal
- Scheduling based on day, date, time, next reboot etc

Mailer engine

- For auto email communications of status reports and alerts
- Create users, user groups, associate alert reports to be mailed, frequency of mailing etc
- Can configure all report types and supported alerts to be emailed to configured users

Global settings

- Tree view & Group management configuration
- Heartbeat configuration and Batch Schedule
- Communication options (HTTP/HTTPS) for LAN/WAN/Internet
- Global settings for application monitoring & service management
- Global settings for software inventory master
- Image capture and deployment global configuration
- Image & properties backup and restore configuration settings
- Remote installation and History report settings
- Database backup and restore settings: automated / periodic database backup
- Mailer engine SMTP server configuration, user management and settings

Android MDM Features

| Function | Features | Android 6.x | Android 5.x |
|---|--|-------------|-------------|
| Domain, user & mobile device enrollment & provisioning | Google managed domain enrollment of single or multiple domains for mobile device management. | Yes | Yes |
| | Single or multiple user account creation by method of synchronization with Microsoft ADS / LDAP for user provisioning. | Yes | Yes |
| | Manual method of user provisioning. | Yes | Yes |
| | Work profile creation and management for the following multiple scenarios: 1) BYOD/user owned devices/ BYOD (Work profile). 2) Company owned devices (Work Managed). 3) Single use devices (POS/Kiosk/Digital Signage etc). | Yes | Yes |
| | Automated device enrollment method of mobile device management. (Using google account method of work profile setup including automatic download and communication configuration of agent.) | Yes | Yes |
| | Manual device enrollment method of mobile devices for management. | Yes | Yes |
| Group Management of devices | OU / Directory structure cloning and clone synchronization with Microsoft ADS /LDAP. | Yes | Yes |
| | Automatic structuring of mobile devices in respective groups based upon computer name or user account | Yes | Yes |
| | Preparation/Configuration of device & application policies, restrictions and settings at OU/Group level. | Yes | Yes |
| | Group Inheritance of device & application policies, restrictions and Settings. (Policies configured at OU/Group level will be inherited by devices automatically) | Yes | Yes |
| | Group information and configuration summary | Yes | Yes |
| Device Inventory Information | Capture of device inventory data | Yes | Yes |
| | Periodic synchronization of inventory data | Yes | Yes |
| | Detailed and granular system information including hardware & software inventory, device status, gps info | Yes | Yes |
| | Software Information includes summary, current profile settings, Hardware Information, Software Information, Active Admins, Certificate Details, Application Information list of Installed apps, downloaded apps, installed certificates | Yes | Yes |
| | System configuration settings summary | Yes | Yes |
| Network Settings | WiFi connection manager and WiFi settings: Create Wi-Fi configuration, Modify Wi-Fi configuration | Yes | Yes |

| | | | |
|--------------------------|---|-----|-----|
| Administration | Account management settings: Toggle account management, Get account types with management disabled | Yes | Yes |
| | Certificate Management: Install a private key certificate, Override client certificates with alias, Install a CA2 certificate, Get a list of CA certificates, Remove all CA certificates, Manage delegated certificate installer | Yes | Yes |
| | Global application policy: Set Input Methods, Accessibility, Install From Unknown Sources, Runtime Permission | Yes | Yes |
| | Manage Profile Policy: Profile Policy, Cross-Profile Widgets Providers, Cross Profile Intent, Clear All Cross Profile Intent | Yes | Yes |
| | Application settings: Enable system apps , Enable a system app by package name, Enable a system app by intent, Hide apps, Unhide apps, Manage app restrictions, Block uninstallation, Block uninstallation by package name, Block uninstallation list | Yes | Yes |
| Security settings | Default device/profile encryption. | Yes | Yes |
| | Passcode policy :Enforce strict passcode to prevent unauthorized access, length, complex/alpha numeric, no of failed attempts, expiration, reset policy | Yes | Yes |
| | Notification on removal of SIMs / insertion of other SIMs, Detect rooted and jail broken devices, device heart beat not reported for set duration, passcode policy compliance | Yes | Yes |
| | Work profile/Data security policy: Options to data wipe , disable work profile manually or automatically based upon notifications | Yes | Yes |
| | Enable/disable peripheral and restrictions for Wireless, BT, Location, Camera, USB | Yes | Yes |
| | user restriction policy: Allow web links to apps of the parent, Disallow apps control, Disallow config credentials, Disallow config VPN, Disallow cross-profile copy/paste, Disallow debugging features, Disallow install apps, Disallow install unknown sources, Disallow modify accounts, Disallow outgoing beam, Disallow share location, Disallow uninstall apps, Ensure verify apps, Allow installs from unknown sources | Yes | Yes |
| | Camera and screen capture policy: Disable camera, Capture image, Capture video, Disable screen capture | Yes | Yes |
| | Keyguard settings: Disable unredacted notifications, Disable trust agents, Disable fingerprint | Yes | Yes |
| | Enforce application permissions and restrictions. | Yes | Yes |
| Remote Control | Send Message | Yes | Yes |
| | Remove Device | Yes | Yes |
| | Sync | Yes | Yes |
| | Shadowing | Yes | Yes |

| | | | |
|-------------------------------|--|-----|-----|
| | Device Lock: Max time to screen lock (seconds) , Max password failures for local wipe | Yes | Yes |
| Application management | App store layout creation and management | Yes | Yes |
| | Application approval, bulk licensing/license management, distribution, user product set | Yes | Yes |
| | Add/Remove Apps silently, Apply permission and restrictions to app. | Yes | Yes |
| | File transfer, auto sync of application installation data | Yes | Yes |
| | Distribution and Repository manager settings | Yes | Yes |
| Task management | Task activity | Yes | Yes |
| | Task scheduling | Yes | Yes |
| Common features | user rights implementation | Yes | Yes |
| | Heartbeat module | Yes | Yes |
| | HTTPS/SSL support | Yes | Yes |
| | FTP Over SSL | Yes | Yes |
| | Repository module | Yes | Yes |
| | Email Sending | Yes | Yes |
| Reports | General reports | Yes | Yes |
| | Logs | Yes | Yes |
| | Alerts | Yes | Yes |
| | Dashboard | Yes | Yes |
| Monitoring | Compliance of passcode | Yes | Yes |
| | Compliance of app restrictions and peripheral restrictions | Yes | Yes |
| | Status of device and work profile | Yes | Yes |
| Agent Features | Settings Panel applet | Yes | Yes |
| | App drawer displaying Device id, signed user id and workprofile status, critical settings status | Yes | Yes |
| | Task logs | Yes | Yes |

Enterprise scalability – device management that grows as you do

Fusion Premium provides enterprise-class device management for businesses of all sizes. From ten to ten thousand devices, the fully scalable hierarchical framework allows you to offer the same outstanding level of service to all your users.

Complete network visibility

Agentless discovery and cataloguing tools capture details of every network-attached device giving you a granular insight into software, licensing and patch levels. Enterprise dashboards and a multi-device VNC Wall add real-time monitoring and control functionality for improved management and support of individual devices.

Simplifying remote device management

Fusion Premium provides A-Grade monitoring for all devices connected to your LAN or WAN. Execute remote commands that tailor your systems within seconds, or deploy new patches and updates with a click.

Full mobile management

Align your BYOD and mobile operations with business strategy using Fusion Premium to provide support, management and administration for devices running iOS*, Android and Windows Phone*.

Automating administration

From collecting and displaying network information on the enterprise dashboards to building event-based actions, Fusion Premium is designed to simplify and automate tasks, freeing your team to focus on other important tasks.

Compliance as standard

Monitor and deploy application patches and antivirus updates to every networked asset using Fusion Premium, and enjoy the benefits of built-in compliance management and reporting. Your system is not only kept up-to-date, but you have records to prove it.

Maximising software resources

Use Fusion Premium to dynamically allocate software and licensing, ensuring that resources are used intelligently and your business never has a costly shortfall or surplus of either. IT budgeting also becomes much easier to define and comply with.

*Product function that is part of a phased release

About VXL Software

VXL Software is a global company, with offices in Asia, Europe and the USA. VXL Software is a division of VXL Instruments. Established in 1976, VXL is a global leading manufacturer of thin-, zero- and cloud-client devices. VXL Software has locations in the USA, UK, France, Germany, the United Arab Emirates, India and Singapore. VXL Software's Americas Group is headquartered in Houston, Texas. The European headquarters is in Manchester. VXL Software's development team, and the Asia Pacific headquarters, are based in Bangalore, India.

Web: www.vxlsoftware.com

E-mail: sales@vxlsoftware.com

Americas

403 Corporate Woods Drive, Magnolia, TX 77354, USA
Tel: +1 877 242 7801

Europe

Carrington Business Park, Manchester Road,
Manchester. M31 4DD, UK
Tel: +44 (0) 161 775 4755

United Arab Emirates

1610, Tiffany Tower, Cluster 'W', Jumeirah Lake Towers,
Dubai, UAE
PO Box : 337111
Tel: +971 4 4508361

India

4th Floor, Kimatrai Building, 77/79, Maharshi Karve Marg,
Marine Lines(E), Mumbai - 400002, India
Tel: +91 (0) 22 42203100

Asia Pacific

167, Jalan Bukit Merah, # 06-12(SR-25) The Connection II,
Singapore -150167
Tel: +65 6278 8180



All trademark logos, including Microsoft Windows, Windows Embedded, Windows Phone, Linux, Android, Apple OS X and iOS are acknowledged - and remain the property of their respective owners in the US and/or other countries.